



**Environmental
Works, Inc.**

**Risco R-II School District
Lead in Drinking Water
Sampling and Testing Plan**

Prepared For:

Risco R-II School District
P. O. Box 17
101 Locust St.
Risco, Missouri 63874

Prepared By:

Environmental Works, Inc.
2008 North Westwood Blvd.
Poplar Bluff, MO, 63901

Plan Prepared:

December 27, 2023

Table of Contents

1.0 Purpose	1
1.1 Regulatory Schedule Requirements (RSMo 160.077(4)).....	1
2.0 School District Description and Contact Information	2
2.1 School District Information	2
2.2 Buildings	2
3.0 Inventory	3
3.1 Outlet Identification and Prioritization	3
4.0 Sampling and Testing	4
4.1 Initial Sampling and Testing.....	4
4.2 Subsequent Sampling and Testing	4
APPENDIX A – Building Diagrams	A
APPENDIX B – Building Summary	B
APPENDIX C – Outlet Inventory	C

1.0 Purpose

Environmental Works, Inc. (EWI), on behalf of the Risco R-II School District (Risco), has prepared this Lead in Drinking Water Sampling and Testing (LDWST) Plan in response to the Missouri Revised Statutes of Missouri (RSMo) Chapter 160 Section 077 (160.077). This LDWST Plan includes procedures for inventorying and sampling outlets used for drinking water and water dispensed for cooking and cleaning of eating and cooking utensils in each of the school buildings.

This Plan has been prepared to meet the requirements of the RSMo 160.077, the Environmental Protection Agency's (EPA) 3Ts for Reducing Lead in Drinking Water, and the EPA Safe Drinking Water Act (SDWA). The Risco R-II School District has distributed this LDWST Plan to the public through the District website (<https://www.risco.k12.mo.us/>). General information on the health effects of lead contamination and additional informational resources for employees and parents of children at each school will be provided upon request.

1.1 Regulatory Schedule Requirements (RSMo 160.077(4))

In accordance with RSMo 160.077, on or before January 1, 2024, each school will:

- Conduct an inventory of all drinking water outlets and all outlets that are used for dispensing water for consumption, cooking, and cleaning of cooking and eating utensils;
- Develop a Plan for testing each outlet inventoried;
- Provide the Plan to the public; and
- Upon request, provide general information on the health effects of lead contamination and additional informational resources for employees and parents of children at each school.

Before August 1, 2024, or on the first day students will be present in the building, whichever is later, each school will:

- Complete sampling in accordance with RSMo 160.077,
- Make all testing results and any lead remediation plans available on the school's website within two weeks of receiving final analytical test results, and
- Remove and replace any drinking water coolers or drinking water outlets that the EPA has determined are not lead-free under the federal Lead Contamination Control Act of 1988.

2.0 School District Description and Contact Information

2.1 School District Information

School Name: Risco R-II

School District: Risco R-II School District

School Type: Public

Address: 101 Locust St.
Risco, Missouri 63874

Phone: 573-396-5568 (O) (F)

Email: abaker@risco.k12.mo.us

Contact: Dr. Amy Baker
Superintendent
573-396-5568 (O)

2.2 Buildings

The following table summarizes the schools covered in this LDWST Plan.

Schools	Level	Grade	Address
Risco R-II Elementary	Elementary	Pre-K – 8th	101 Locust St. Risco, Missouri 63874
Risco R-II High School	High School	9th – 12th	101 Locust St. Risco, Missouri 63874
Risco R-II Gym	Gym	Pre-K – 12th	101 Locust St. Risco, Missouri 63874

3.0 Inventory

The Risco R-II School District completed a building and outlet questionnaire, and EWI completed a site visit to gather information such as:

- Date of building construction,
- Year and location of plumbing repairs,
- Location where water enters the building and flow,
- Identification of any known lead lines or plumbing components,
- Location of water pipes and piping material,
- Location of any tanks in the plumbing system,
- Identification of all faucets and fixtures used for drinking water and cooking, and
- Identification of filters, aerators, signs of corrosion, or banned water cooler tanks.

3.1 Outlet Identification and Prioritization

Drinking water and cooking outlets were identified from the questionnaire and site visit in accordance with the Missouri RSMo's 160.077.2 drinking water outlet definition, which includes but may not be limited to:

- a) A water fountain, faucet, or tap that is used or potentially used for drinking or food preparation and
- b) Ice-making and hot drink machines.

Building diagrams are attached in **Appendix A**, detailed information on each building can be found in **Appendix B**, and the outlets identified in the inventory are outlined in **Appendix C**.

4.0 Sampling and Testing

4.1 Initial Sampling and Testing

The outlet inventory and prioritization schedule included in this plan will be used to conduct sampling for the Risco R-II School District. Samples will be collected using proper sampling procedures. The sampler will utilize laboratory prepared 250-milliliter (mL) unpreserved plastic containers to collect outlet water for analysis of lead by Method 200.8. Samples will be labeled, managed under a Chain of Custody, and sent to a certified laboratory for analysis. EWI personnel will collect samples from each identified outlet based on the following criteria:

First Draw Sampling

First draw samples will be immediately collected from the outlet from the first water after the outlet is turned on. Samples will be collected after a stagnation period of at least 8 hours but no greater than 18 hours.

Flush Sampling

Follow-up flush samples will be collected from at least 25% of inventoried drinking water outlets.

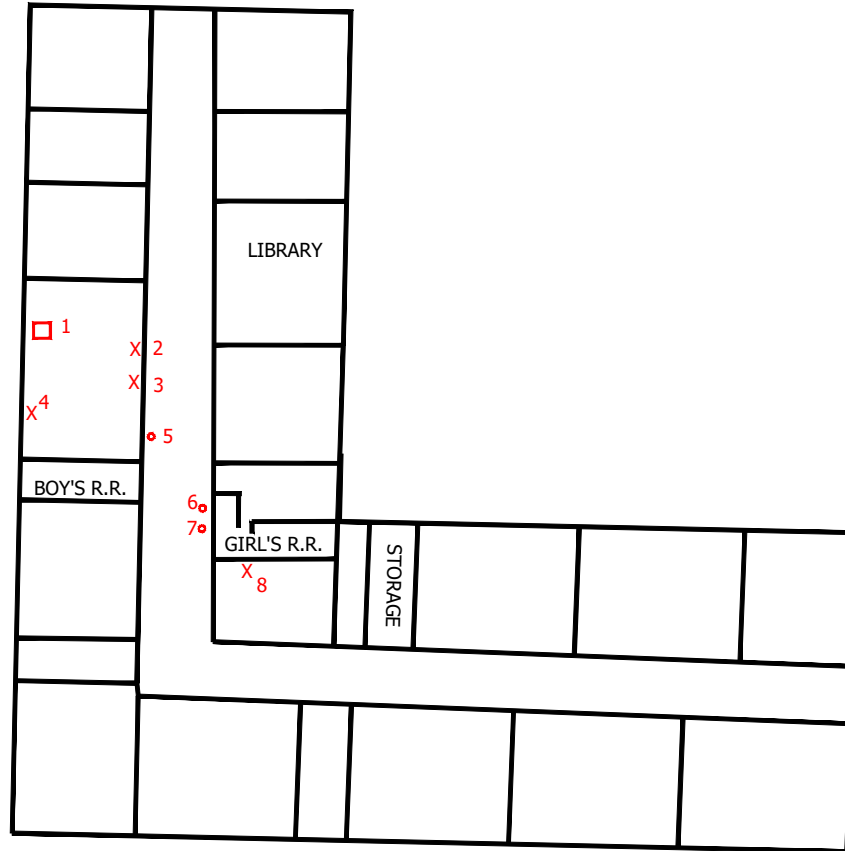
All results will be summarized in a final report, submitted to the Missouri Department of Health and Senior Services, and published on the Risco R-II School District website.

4.2 Subsequent Sampling and Testing

If initial testing finds lead above 5 parts per billion (ppb), the Risco R-II School District will implement remedial measures, then test and sample 25% of remediated drinking water outlets by first draw and follow-up flush sampling annually.

If initial testing does not find a drinking water source with a lead concentration above 5 ppb, Risco R-II School District will complete testing and sampling every five years.

APPENDIX A – Building Diagrams



LEGEND	
○	= FOUNTAINS
X	= SINKS
△	= ICE MACHINE
□	= DISHWASHER

CHECKED BY:
M. KEITH

E.W.I. # 234528
DRAWN BY: MLH
DEC. 17, 2023

NOT TO SCALE



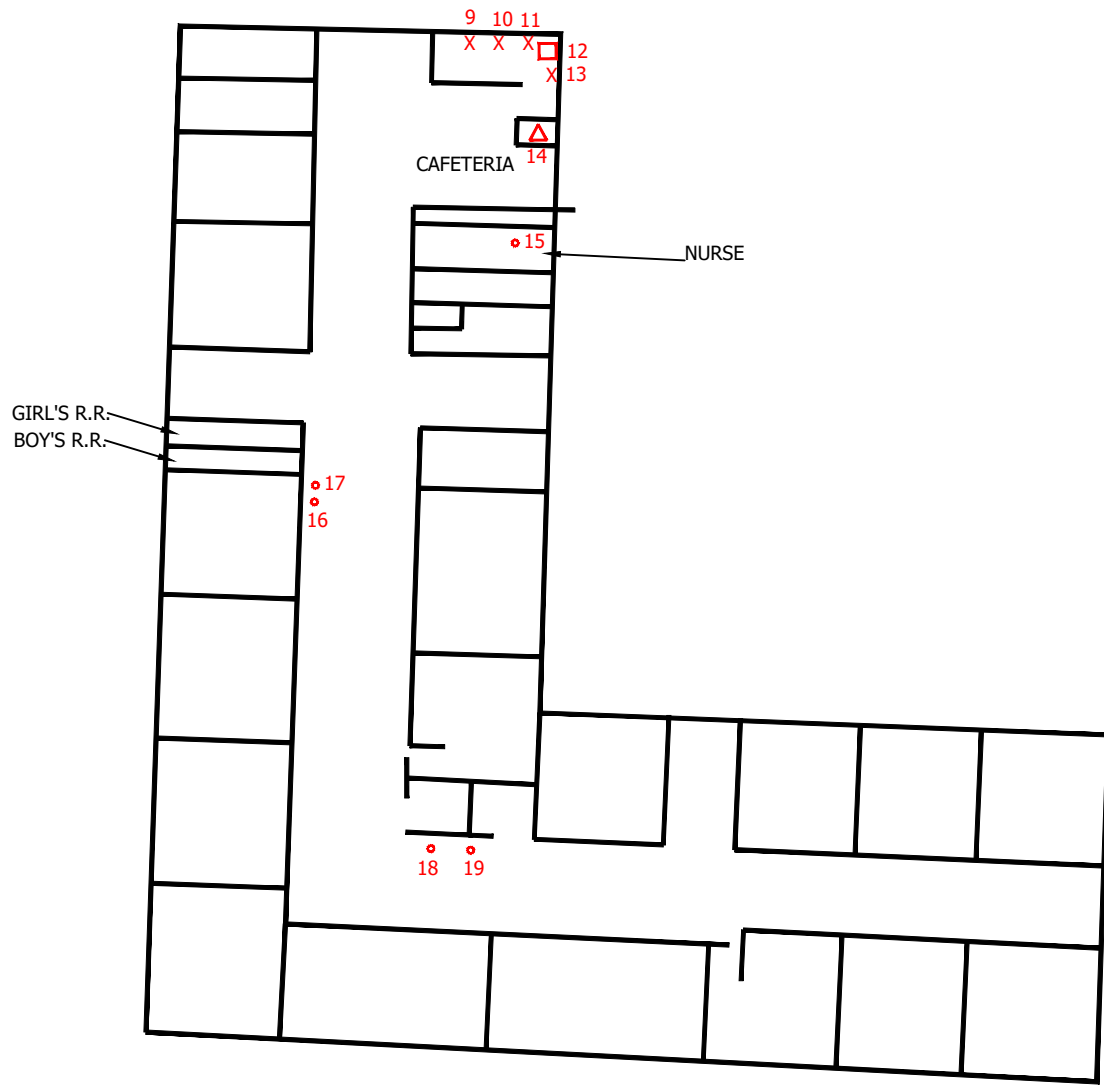
ENVIRONMENTAL WORKS

Springfield Office Location:
1455 E. Chestnut Expressway
Springfield, MO 65802
Phone: (417) 890-9500

RISCO HIGH SCHOOL MAP

RISCO R-II SCHOOL DISTRICT
RISCO, NEW MADRID COUNTY, MISSOURI

FIGURE
A.0



LEGEND	
○	= FOUNTAINS
X	= SINKS
△	= ICE MACHINE
□	= DISHWASHER

CHECKED BY:
M. KEITH

E.W.I. # 234528
DRAWN BY: MLH
DEC. 18, 2023

NOT TO SCALE

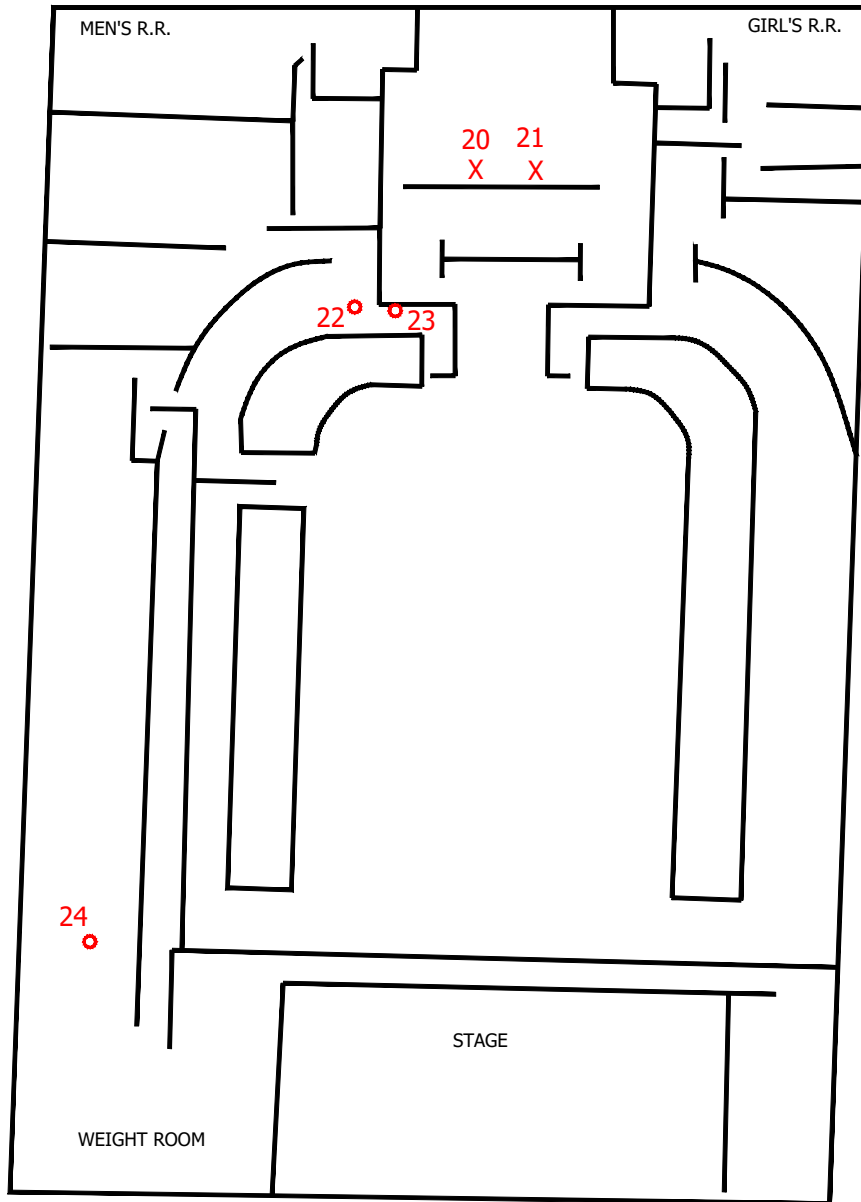


Springfield Office Location:
1455 E. Chestnut Expressway
Springfield, MO 65802
Phone: (417) 890-9500

RISCO ELEMENTARY SCHOOL MAP

RISCO R-II SCHOOL DISTRICT
RISCO, NEW MADRID COUNTY, MISSOURI

FIGURE
B.0



LEGEND	
○	= FOUNTAINS
X	= SINKS
△	= ICE MACHINE
□	= DISHWASHER

CHECKED BY:
M. KEITH

E.W.I. # 234528
DRAWN BY: MLH
DEC. 17, 2023

NOT TO SCALE



Springfield Office Location:
1455 E. Chestnut Expressway
Springfield, MO 65802
Phone: (417) 890-9500

BUILDING C MAP

RISCO R-II SCHOOL DISTRICT
RISCO, NEW MADRID COUNTY, MISSOURI

FIGURE
C.0

APPENDIX B – Building Summary

School District: Risco R-II
 Person Completing Questionnaire: Amy Baker/Bub Boyle

Date: 12/7/2023
 Title: Superintendent/Maintenance

Building	Address	Original Construction Date	Outlet Count	Any Building Additions? NA if unknown.			Where Does Water Enter the Building?	Who Provides Water to the Building?	Notes
				Yes/No/NA	Year of Addition	What Was Added?			
Risco High School	101 Locust Street	1946	8	No	NA		Southeast corner of building	Risco City Water	
Risco Elementary	101 Locust Street	1959	11	No	NA		North side of building along highway	Risco City Water	
Gymnasium	101 Locust Street	1947	5	No	NA		East side of gym/ southside basement	Risco City Water	

Total Outlets **24**

APPENDIX C – Outlet Inventory

Summary of Outlet Inventory

Map ID	Program Sample ID	Outlet Type <i>(see examples below)</i>	Specific Location	Specific Location	Sample Type
	Format (Bldg-floor-Rm-Outlet-Type-Sample Number)				
1	01-01-KIT-DISH-P-001	Dishwashwer	Kitchen	High School	Primary
2	01-01-KIT-KF-P-002	Faucet	Kitchen	High School	Primary
3	01-01-KIT-KF-P-003	Faucet	Kitchen	High School	Primary
4	01-01-KIT-KF-P-004	Faucet	Kitchen	High School	Primary
5	01-01-HW-DW-P-005	Fountain	Hall	High School	Primary
6	01-01-HW-DW-P-006	Fountain	Hall	High School	Primary
7	01-01-HW-DW-P-007	Fountain	Hall	High School	Primary
8	01-01-CR-CF-P-008	Faucet	Classroom 12	High School	Primary

Summary of Outlet Inventory

Map ID	Program Sample ID	Outlet Type <i>(see examples below)</i>	Specific Location	Specific Location	Sample Type
	Format (Bldg-floor-Rm-Outlet-Type-Sample Number)				
9	02-01-KIT-KF-P-009	Faucet	Kitchen	Elementary	Primary
10	02-01-KIT-KF-P-010	Faucet	Kitchen	Elementary	Primary
11	02-01-KIT-KF-P-011	Faucet	Kitchen	Elementary	Primary
12	02-01-KIT-DISH-P-012	Dishwasher	Kitchen	Elementary	Primary
13	02-01-KIT-KF-P-013	Faucet	Kitchen	Elementary	Primary
14	02-01-KIT-IM-P-014	Ice Machine	Kitchen	Elementary	Primary
15	02-01-NURSE-CF-P-015	Fountain	Nurse	Elementary	Primary
16	02-01-HW-DW-P-016	Fountain	Hall	Elementary	Primary
17	02-01-HW-BF-P-017	Bottle Filler	Hall	Elementary	Primary
18	02-01-HW-DW-P-018	Fountain	Hall	Elementary	Primary
19	02-01-HW-BF-P-019	Bottle Filler	Hall	Elementary	Primary

Summary of Outlet Inventory

Map ID	Program Sample ID	Outlet Type <i>(see examples below)</i>	Specific Location	Specific Location	Sample Type
	Format (Bldg-floor-Rm-Outlet-Type-Sample Number)				
20	03-01-CS-KF-P-020	Faucet	Concession Stand	Gymnasium	Primary
21	03-01-CS-KF-P-021	Faucet	Concession Stand	Gymnasium	Primary
22	03-01-HW-DW-P-22	Fountain	Hall	Gymnasium	Primary
23	03-01-HW-BF-P-23	Bottle Filler	Hall	Gymnasium	Primary
24	03-01-HW-DW-P-24	Fountain	Hall	Gymnasium	Primary